





BEGINNINGS OF CHINA

7.1







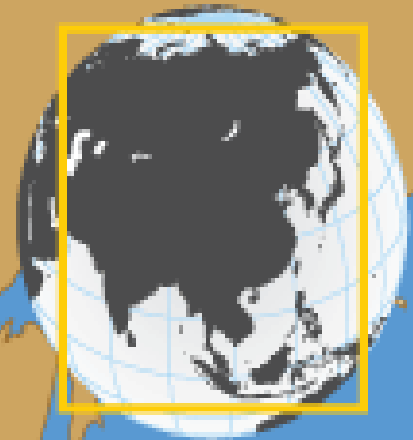
A S I A

China

INDIAN
OCEAN

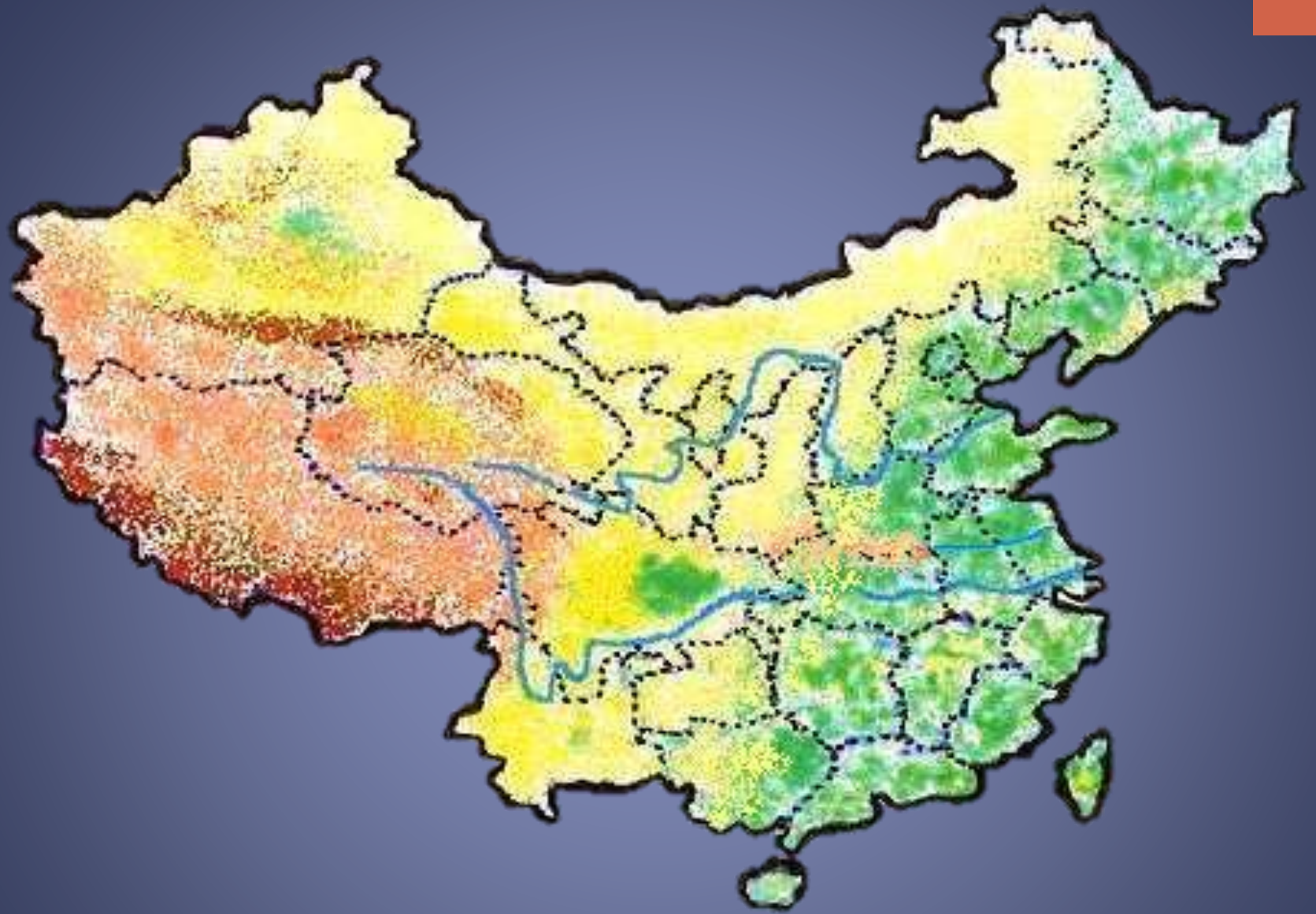
PACIFIC
OCEAN

Map by NG Maps









+RIVERS



Gobi Desert

Taklamakan
Desert

Yellow
River

Tibetan Plateau

Himalayas

Yangtze River

Pearl River

CHINA'S REGIONS



The Yellow River Map



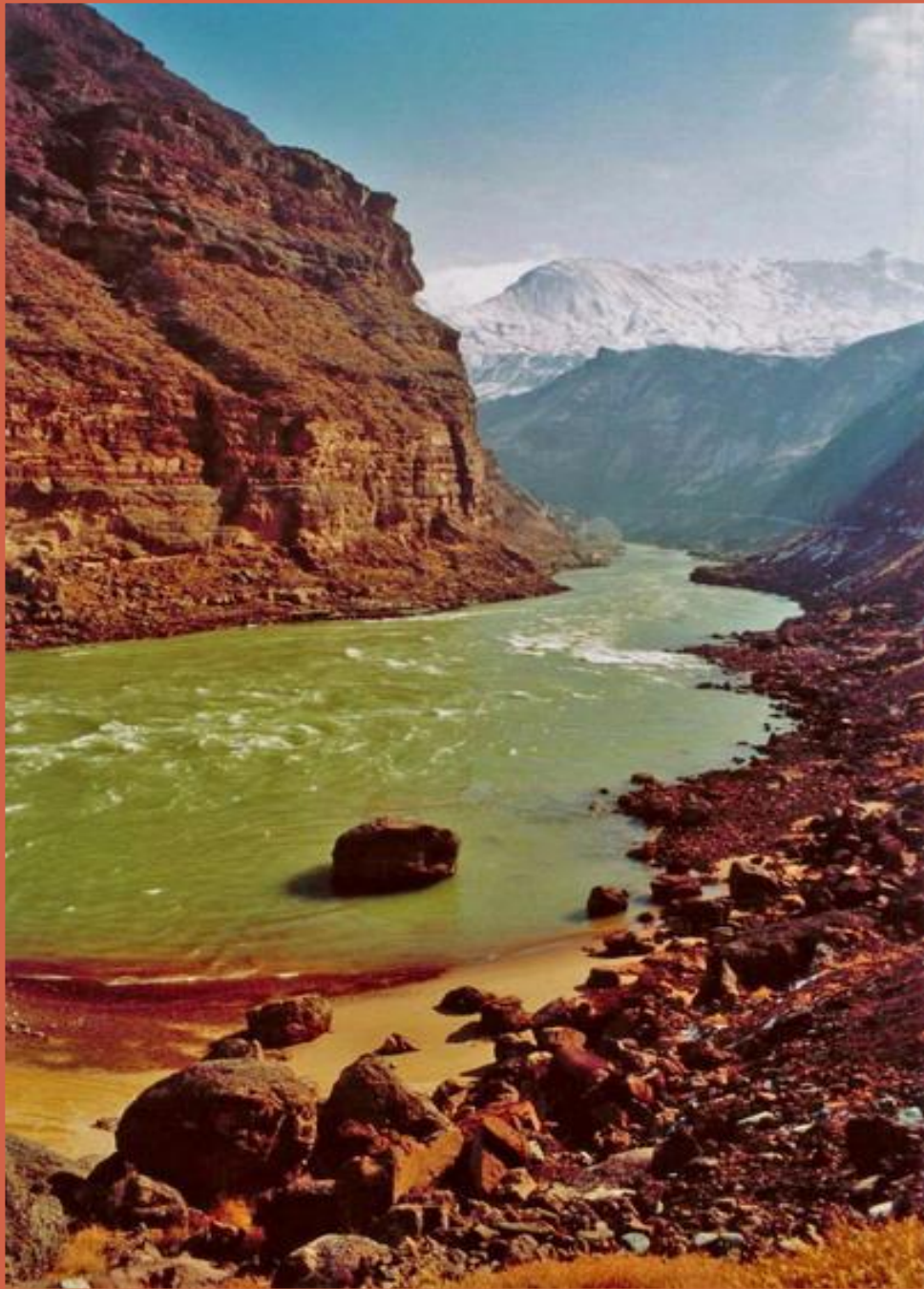
Designed by: Cullen Chen















长江流域

Yangtze Drainage Basin









+ MOUNTAINS



CHINA
 0 km 200 400 600 km
 © 2009 Ezilon.com All Right Reserved

- National Capital (11,510,000 in 2000)
- over 10,000,000
- over 6,000,000
- over 2,500,000
- over 1,000,000
- other main city
- other city
- Capital of autonomous region
- Capital of province
- Government-controlled municipality
- Shanghai
- Hong Kong* Special administrative region





Altai

CHINA

Tien Shan

Qilian Shan

Pamirs

Kunlun Shan

Hindu Kush

Karakoram

TIBETAN
PLATEAU

Himalaya

INDIA











Desert

Mountains

Water

Mountains

Water

DYNASTIES

+

LINE OF
RULERS FROM
ONE FAMILY

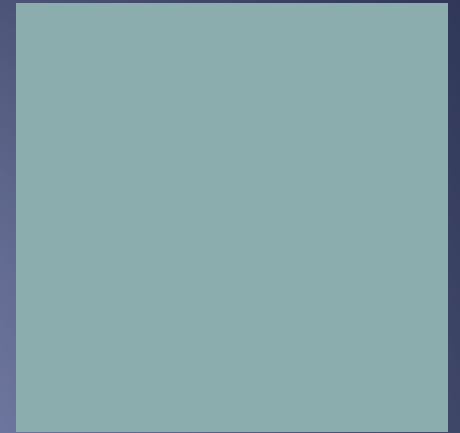


Shang

Zhou

Qin

Han



+

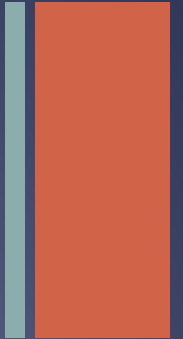
SHANG DYNASTY

- Built first cities in China
 - Palace & temple at center of cities
- Expanded territory
 - Warlords governed territories
 - Aristocrats
- Worshipped many gods
 - Both admired and feared the gods

+

ZHOU DYNASTY

- Longest dynasty
 - More than 800 years
- Grew the kingdom
 - Ruled with help of bureaucracy



+

QIN DYNASTY

- Defeated the Warring States
- Led by Shi Huang di
 - Brought many changes to government
 - Ruled China with absolute control and swift, harsh punishment
 - Created common currency
 - Constructed own tomb
- Construction of the Great Wall

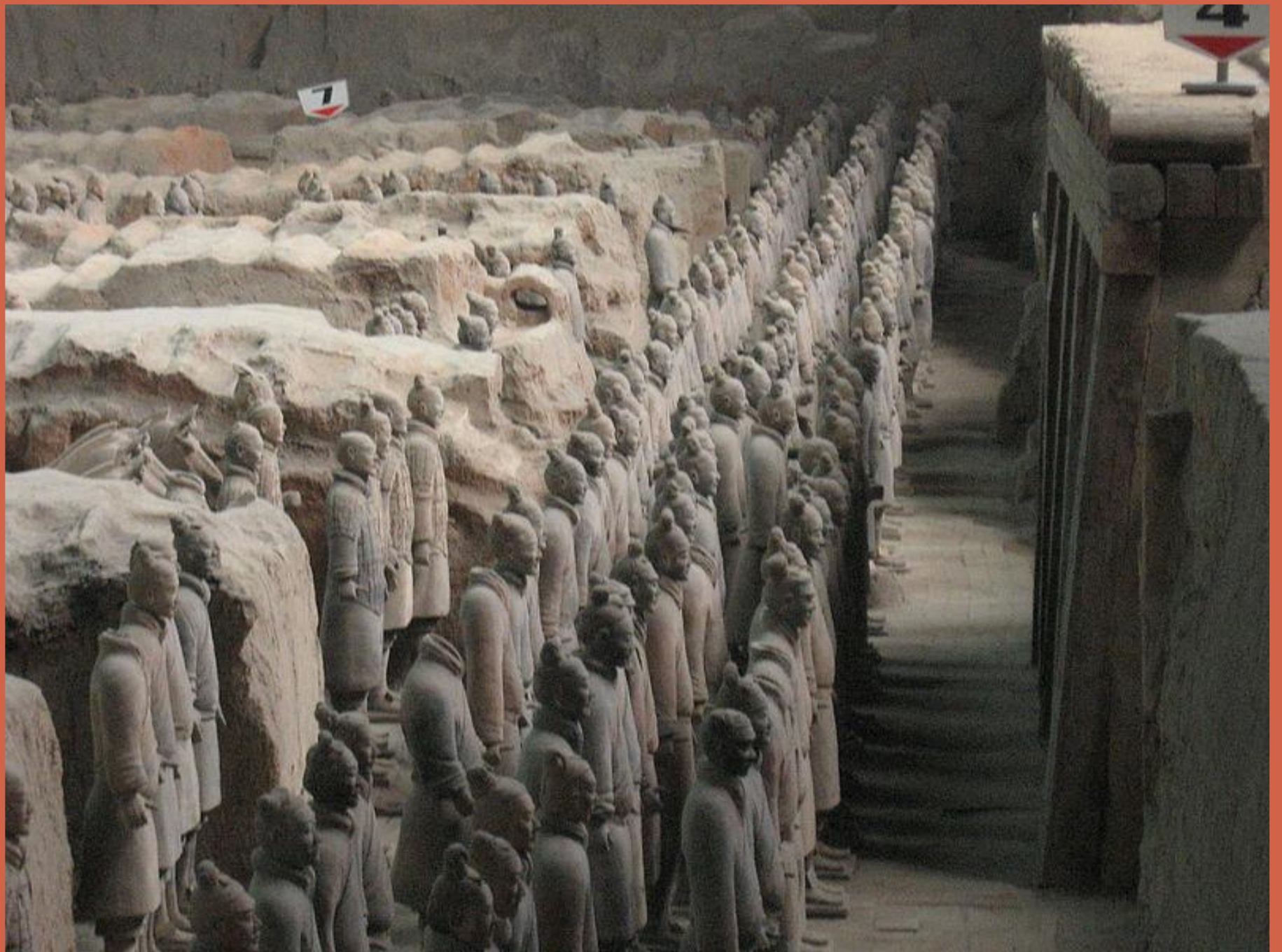


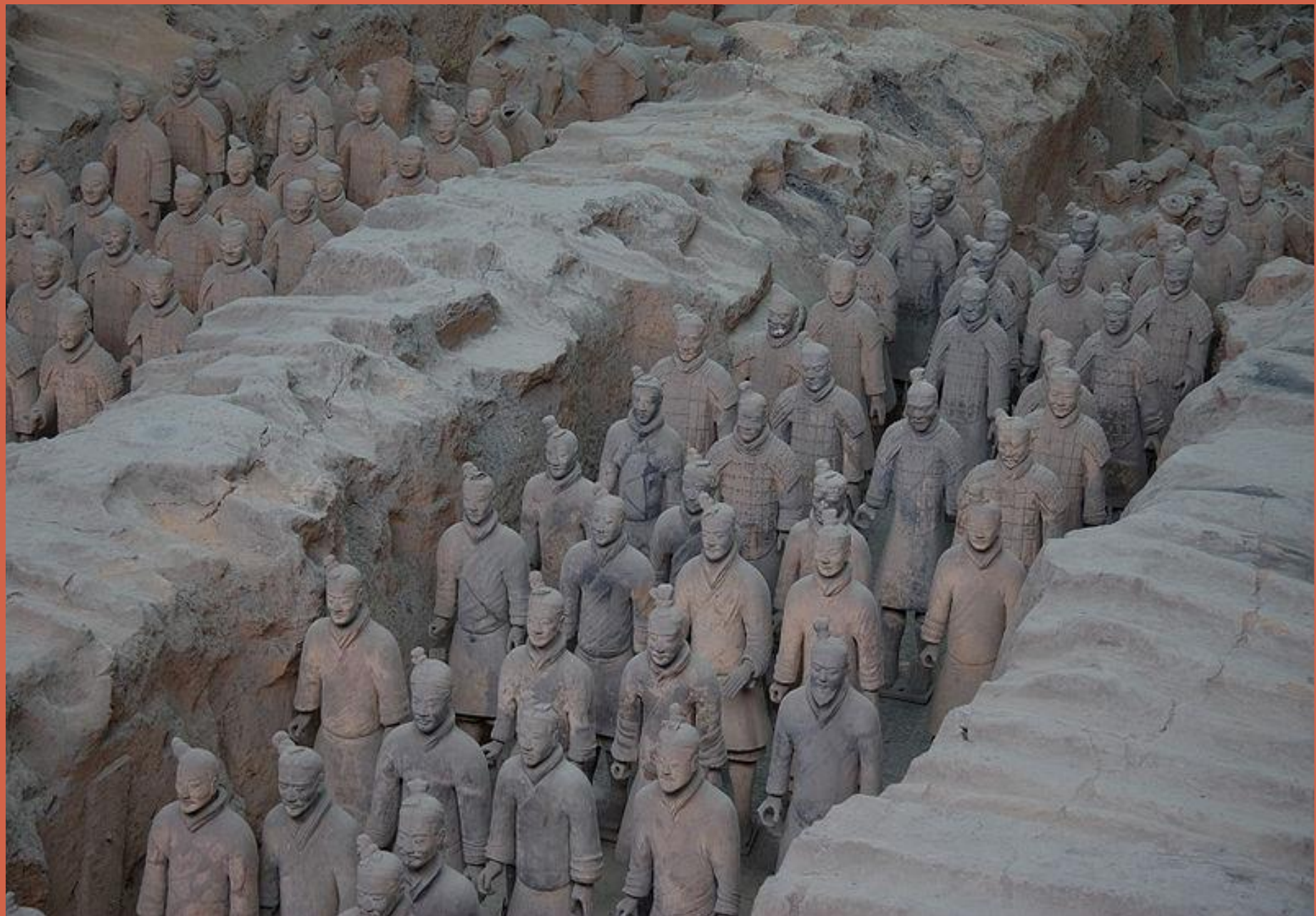




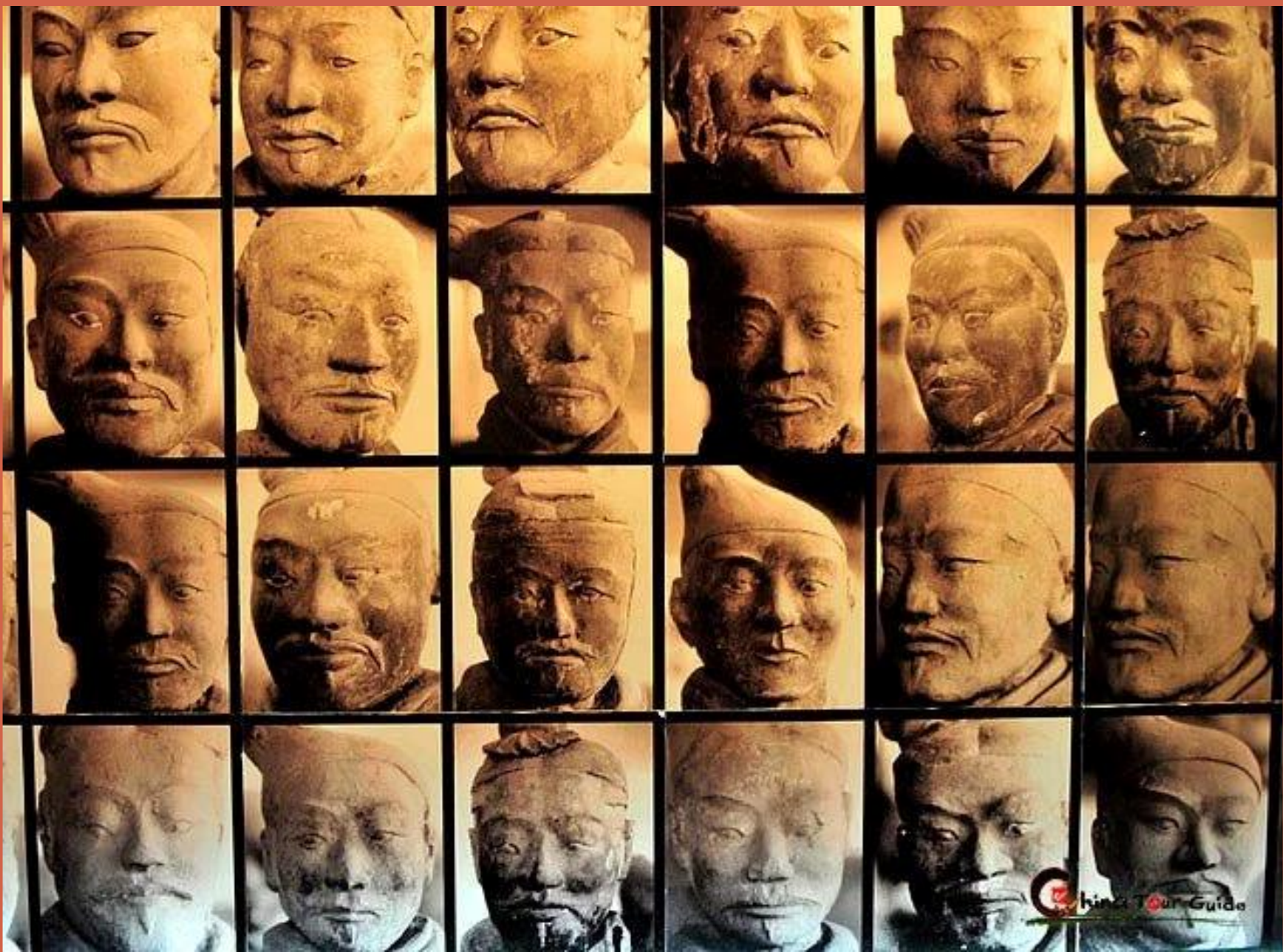
2009 City Centre, MD





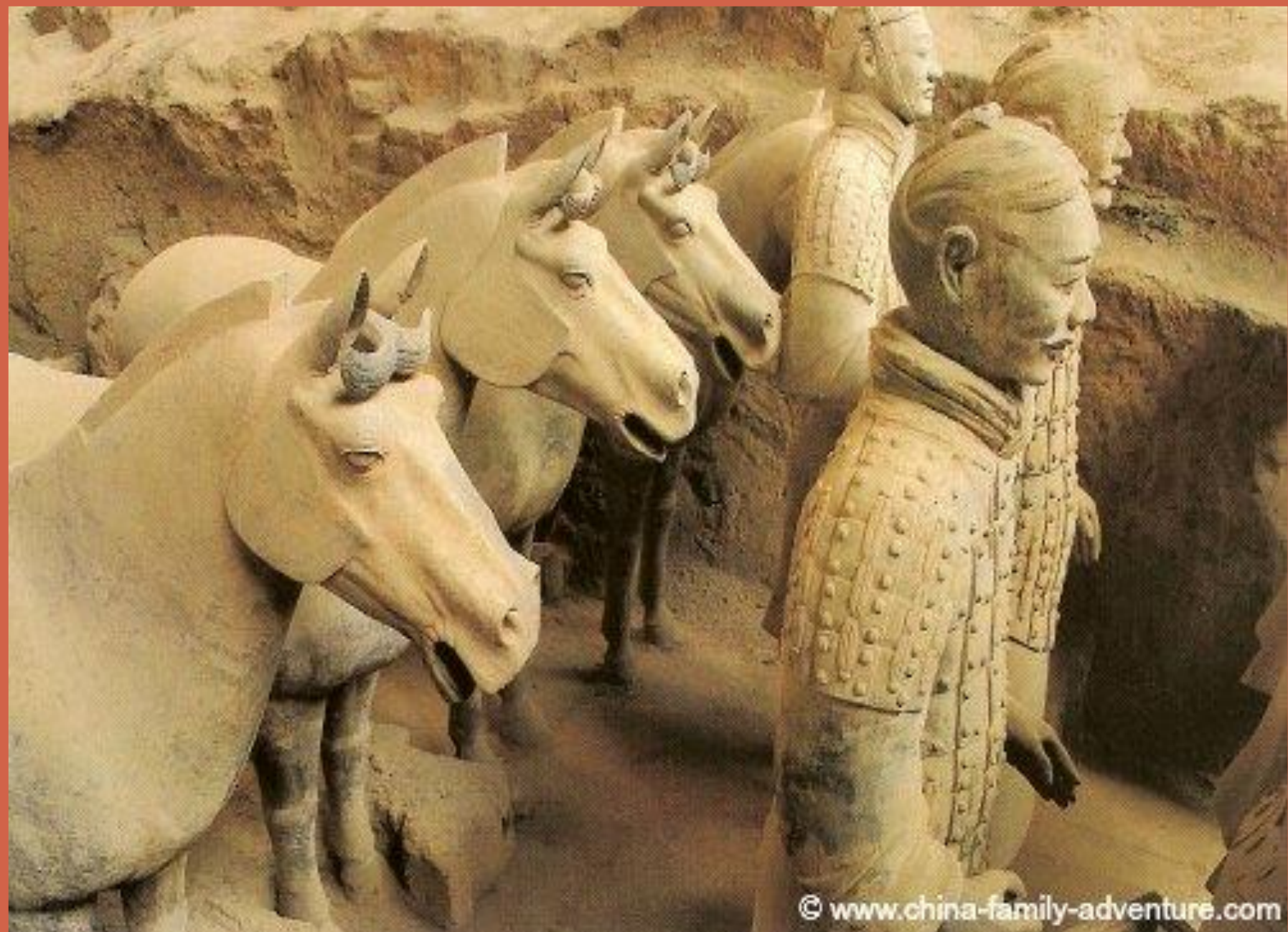














+

HAN DYNASTY

- Ruled for more than 400 years
- Population grew to over 60 million
- Government positions based on ability
- Literature and art blossomed
- Many inventions
- Medical advances
- Silk Road

